

Thermal response of structured and contaminated carbon surfaces to heat pulses

D. Hildebrandt *, A. Duebner

EURATOM Association, Max-Planck-Institut für Plasmaphysik, Teilinstitut Greifswald, Wendelsteinstraße 1, 17491 Greifswald, Germany

Abstract

Experiments involving well-defined heat pulses of laser radiation on the CFC target material NB31 and plasma-exposed CFC-samples with known composition and thickness of the contamination layer have been performed to investigate the thermal properties and behaviour at the surface. Special attention is focussed on the dependence of the surface temperature enhancement and its temporal evolution on the amount of the deposited material. The measured surface temperature excursions are compared with values of analytical and numerical solutions of the heat diffusion equation taking into account a surface region with low thermal conductivity or poor thermal contact to the underlying substrate material.

© 2007 Elsevier B.V. All rights reserved.

PACS: 44.50; 44.30; 44.10

Keywords: Carbon based materials; Divertor tiles; Laser application; Power deposition; IR thermography

1. Introduction

Important aims of the Wendelstein 7-X stellarator experiment presently under construction are the studies of energy and particle exhaust under quasi-stationary conditions and the development of a reactor relevant divertor system. The design of the target plates should keep the local power load below 10 MW/m^2 . The target elements consists of the carbon fibre composite (CFC) material NB31 connected to water cooled CuCrZr-structures [1]. The temperature of the tile surface exposed to the plasma is expected to rise up to values of 1300 K.

To prevent damage of target elements by overheating a continuous supervision of the whole target surface area by thermography is essential.

Such measurements are known to be affected by a reduced thermal conductivity at the surface due to the morphology of the CFC material [2] and surface modification occurring during plasma exposure. Uncertainties in thickness and thermal conductivity of deposited surface layers can lead to faulty interpretation of thermographic measurements [3,4].

The accuracy of temperature measurements on the CFC material NB31 at surface heat loading using IR cameras operating in different wavelength regions has been examined with respect to morphological effects for samples of pre-series W7-X target tiles.

The thermal response of contaminated surfaces on heat pulses has been investigated for samples

* Corresponding author.

E-mail address: dieter.hildebrandt@ipp.mpg.de (D. Hildebrandt).

from removed tiles of the Divertor II of the tokamak ASDEX-Upgrade.

Temperature excursions measured with high spatial (up to 30 μm) and temporal resolution (up to 100 μs) during and after heat pulses by laser radiation are compared with values of the analytical and numerical solution of the heat diffusion equation taking into consideration a surface region with low thermal conductivity or poor thermal contact to the underlying substrate material.

2. Experimental

The target tiles for W7-X are manufactured by Plansee Ag (www.plansee.com) using CFC-material NB31 produced by Snecma (www.snecma.com). They are described in detail elsewhere [1] and are investigated before heat load tests using ion beams.

The other samples (CFC material SEPCARB N11) were cut from a tile of the ASDEX-Upgrade divertor II. The tile was located at the separatrix position of the inner divertor for five years of operation (1997–2002). Depth profiling using secondary ion mass spectrometry (SIMS) was performed to analyze the contamination layer. It consists mainly of carbon, boron, deuterium and hydrogen with traces of silicon, iron and tungsten. The deposited material amount was determined using calibrated sputtering rates for a-C:D layers checked by a Round-Robin experiment [5]. Amounts up to 0.03 kg/m^2 have been measured. With an assumed density ρ of $2 \cdot 10^3 \text{ kg}/\text{m}^3$ this value corresponds to a layer thickness d of about 15 μm . The samples were irradiated by light of wavelength 1.06 μm from a pulsed Nd:YAG laser or by light of wavelength 807 nm from a cw diode laser. The actual absorbed heat flux has been calibrated by calorimetry [2].

The light of the diode laser has been focused to a spot with Gaussian shaped profile and a standard deviation σ of 0.5–2 mm. Heat fluxes with central densities P_0 up to 12 MW/m^2 and durations τ of up to 1 s have been applied. The light pulses from the Nd:YAG laser had a duration up to 20 ms. Heat fluxes with central densities up to 110 MW/m^2 can be applied at a spot size of 4 mm (Gaussian or rectangular shaped profile).

The surface temperature excursion during and after the heat pulses has been measured by IR-cameras operating in the MIR and FIR wavelength region between 3 and 5 μm (InSb detector array with 256×320 pixels) and 8–15 μm (VOx-microbolometer array with 240×320 pixels). The cameras

have been calibrated versus black body radiation. The emissivity of the materials has been determined by comparison the measured data with temperature values in drilled holes at uniform sample heating and assuming that the emissivity equals one in the holes. Thermal images have been taken with a spatial resolution of up to 30 $\mu\text{m}/\text{pixel}$ and frame rates of 315 Hz or up to 10 kHz at reduced image size (3–5 μm) or 50 Hz (8–15 μm).

3. Modeling

We use both analytical and numerical methods to describe the temporal evolution of the surface temperature at heat loading. Analytic solutions give a transparent parametric dependence of the variables and can be used to check numerical results.

The analytic solution of the 3D-heat conduction equation derived for the central region of the laser spot hitting the substrate given in [2] is completed by a 1D-surface layer model [3,4] taking into consideration a low thermal conductivity in the layer or poor thermal contact between the contamination layer and the substrate. Assuming a heat diffusion coefficient κ_1 corresponding to the thermal conductivity λ_1 ($\kappa_1 = \lambda_1/\rho c_1$, c_1 the specific heat) within this layer the temporal evolution of the temperature increase at the surface is described by

$$\Delta T = P_0 * d/\rho c_1 \kappa_1 * (\Theta(\tau_p - t) * (1 - \exp(-t/\tau)) + \Theta(t - \tau_p) * \exp(-(t - \tau_p)/\tau)) \quad (1)$$

with the time constant of the temperature increase and decrease $\tau = d^2/\kappa_1$. P_0 is the central heat flux density, τ_p the exposure time and $\Theta(t)$ the Heavyside function.

Alternatively, in the case of poor thermal contact $d/\rho c_1 \kappa_1$ has to be replaced in Eq. (1) by $1/\alpha$ with α the heat exchange coefficient between the surface layer and the bulk material. For simplicity the heat conduction coefficient λ , the heat diffusion coefficient κ and the specific heat capacity c are assumed to be constant for both the CFC substrate and the layer.

Numerical calculations have been done by a simulated surface layer on top of the bulk material using the finite element code ANSYS (www.ansys.com). For the calculations the following temperature dependent parameters for the CFC material have been used:

$$\lambda_x(T) = 400 * \exp(-T/315) + 105, \lambda_{yz}(T) = 139 * \exp(-T/315) + 42 \text{ for (NB31) or}$$

$$\lambda_{x,z}(T) = 310 * \exp(-T/315) + 105, \lambda_y(T) = 160 * \exp(-T/315) + 48 \text{ for (N11)}$$

$$c(T) = 2060 * (1 - \exp(-0,00166 * T)) \text{ with } \lambda \text{ in W/K m and } c \text{ in J/kg K.}$$

The specific heat of the layer c_1 and its density are set to 770 J/kg K and $2 * 10^3 \text{ kg/m}^3$, respectively. Its thermal conductivity is an adjustable parameter assumed to be constant.

4. Morphological effects of NB31 on surface temperature

Fig. 1 shows a thermal image of the CFC material NB31 taken by the InSb-camera with 30 μm resolution during application of a heat pulse. It indicates that parts of the fibres have much higher temperature values (emissivity 0.9) than 500 K predicted by numerical modeling.

The time history of the surface temperature at the centre of a laser spot measured by two cameras operating at different wavelength regions with an ordinary spatial resolution of 1 mm is shown in Fig. 3 under a heat pulse with duration of 100 ms.

Numerically calculated results seen in Fig. 2 are obtained for the bulk material. A disturbed surface region with reduced thermal conductivity is then added. As demonstrated in Fig. 2 the temperature excursion measured by the FIR-camera can be quite well modelled by a 25 μm thick surface region with an effective thermal conductivity of 10 W/K m. The numerically calculated results are within 10% of the analytic solution obtained by combining Eq. (1) of

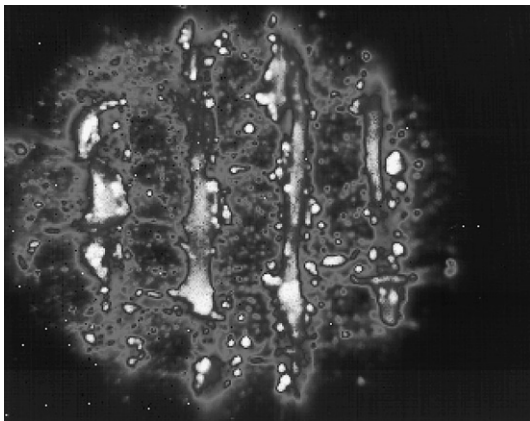


Fig. 1. Thermal image of NB31 taken by the InSb camera with a spatial resolution of 30 μm /pixel during a laser pulse; applied heat pulse $P_0 = 30 \text{ MW/m}^2$, $\tau_p = 7 \text{ ms}$, diameter 8 mm; the temperature varies between 450 K (dark regions) and 800 K (bright regions).

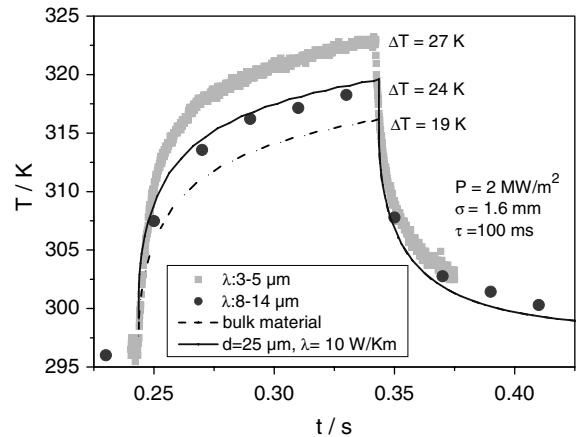


Fig. 2. Comparison of the surface temperature excursion measured on the NB31 material in the MIR and FIR region with numerically calculated results for the bulk material (dashed line) and an added assumed 25 μm surface region of low thermal conductivity (solid line); applied heat pulse $P_0 = 2 \text{ MW/m}^2$, $\tau_p = 100 \text{ ms}$, $\sigma = 1.6 \text{ mm}$.

this paper and Eq. (1) of Ref. [2]. Alternatively, modeling with an effective heat transmission coefficient between the simulated layer and the substrate of 250 $\text{kW/m}^2 \text{ K}$ would give similar results.

Higher temperature values obtained with the MIR-camera in Fig. 2 are the result of an overestimation due to the variation in temperature across the surface [2].

Because the observed temperature pattern changes with the applied heat flux density the error in MIR-measurements also changes. In the present studies it was found that the overestimation is always smaller than 65 K for the CFC-material NB31 under applied heat pulses with flux densities up to 100 MW/m^2 .

5. Thermal effects on contaminated CFC-material

The thermal response of contaminated surfaces on heat pulses has been investigated for the plasma-exposed N11-samples from the inner divertor of ASDEX-Upgrade with heat pulses from the diode laser. The IR-data from the centre of the laser spot is taken with frame rates up to 10 kHz.

Fig. 3(a) shows the temperature excursions for a sequence of heat pulses. At the beginning of the sequence the surface temperature reaches about 1600 K and decreases for successive pulses up to level of about 1100 K.

A single square pulse is shown in Fig. 3(b) together with calculated results assuming a thermal

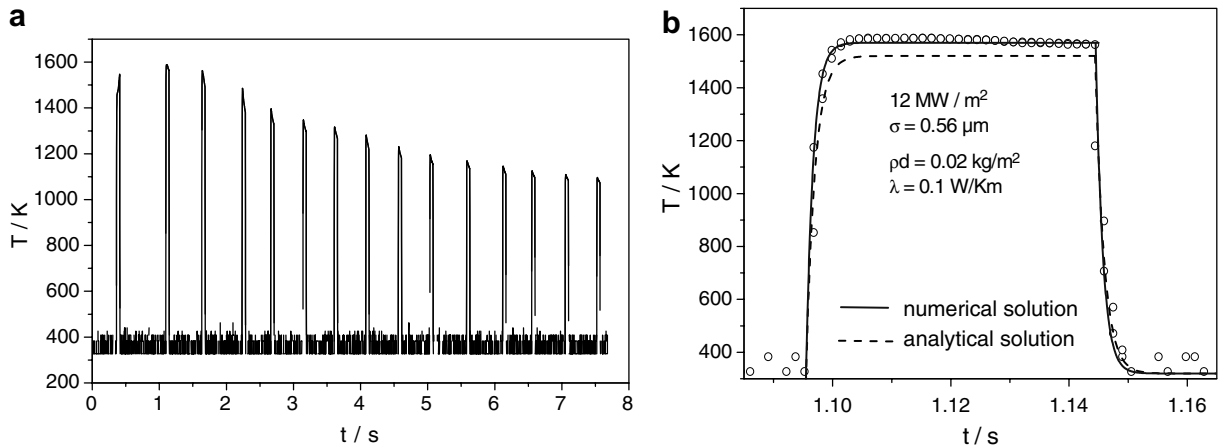


Fig. 3. (a) Temperature excursions for a sequence of heat pulses with duration of 50 ms for a contamination of 0.02 kg/m^2 ; applied heat pulses $P_0 = 12 \text{ MW/m}^2$, $\sigma = 0.56 \text{ mm}$. (b) Detail of the left figure together with calculated results.

conductivity of 0.1 W/K m for the contamination. The measured cooling time is about 1.5 ms and agrees well with the value calculated analytically using Eq. (1). The numerically calculated values are within of 10% of the analytic solution and the differences consistent with the temperature variation of specific heat and thermal conductivity in the bulk material. Besides the temperature decrease during the pulse series the cooling time also decreases continuously. The last measured temperature excursion in Fig. 3(a) at 7.5 s has a time constant of only 0.5 ms.

The decreasing temperature level during successive heat pulses seen in Fig. 3 indicates changes of the thermal parameters at the surface due to degradation of the contamination. This degradation is also found to start after about 150 ms when a continuous heat flux of same power density (12 MW/m^2) is applied. The removal of the contamination is post-mortem confirmed by a crater produced by the laser spot and the depletion of deuterium inside the crater. Crater depths measured by a laser profilometer were found up to $15 \mu\text{m}$ indicating that the density of the contamination is probably somewhat lower than 2 kg/m^3 .

Similar observations of layer decomposition are already observed for a thinner contamination ($\rho d = 0.01 \text{ kg/m}^2$) on samples from the inner divertor I of ASDEX-Upgrade when higher power flux densities (28 MW/m^2) heated the contamination beyond 1000 K [2]. The present results support the hypothesis that the contamination layer is degraded by thermal desorption and the decisive parameter is obviously the surface temperature itself [2].

Fig. 4 shows the dependence of the spot temperature on the original thickness of the contamination for different samples from the divertor II at the beginning and the end of a 12 MW/m^2 heat pulse with duration of 1 s. For comparison numerical calculations were made for two cases. Firstly, the layer has low thermal conductivity ($\lambda_1 = 0.1 \text{ W/K m}$) and good thermal contact to the substrate ($\alpha = 10^6 \text{ kW/K m}^2$). In the other case the layer has the same thermal conductivity as the substrate but the thermal contact is poor ($\alpha = 5 \text{ kW/K m}^2$).

Despite the data scattering and the fact that due to modifications during heating the dependence of

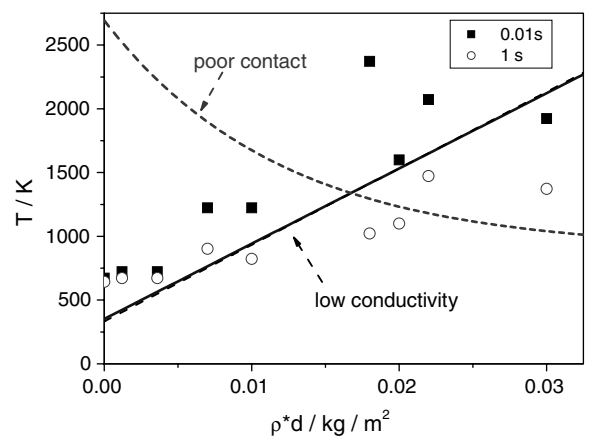


Fig. 4. Dependence of the measured spot temperature on the original deposited material amount at the beginning and the end of a 12 MW/m^2 heat pulse with duration of 1 s. Numerical calculations were made for low thermal conductivity of $\lambda_1 = 0.1 \text{ W/K m}$ (solid line) and for poor thermal contact with $\alpha = 5 \text{ kW/K m}^2$ (dashed line).

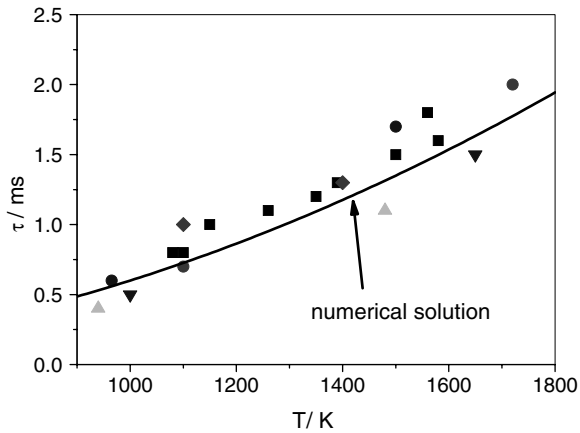


Fig. 5. Correlation between the measured spot temperature and the characteristic cooling time; the result of the numerical calculations (solid line) is obtained using $\lambda_1 = 0.1$ W/K m. The symbols represent different samples.

the measured spot temperature on the thickness of the contamination layer is somewhat ambiguous, it is quite obvious, that the measured results are much better described by low thermal conductivity.

Disregarding the thermal history at the spot location strong correlation between the temperature increase and the characteristic cooling time is experimentally found (see Fig. 5).

The relation between the temperature increase and the characteristic cooling time is well reproduced by numerical calculations. The results are also within of 20% of the analytical solution

$$\tau = \rho c_1 \lambda_1 * \Delta T^2 / P_0^2 \quad (2)$$

obtained using Eq. (1) with $\lambda_1 = 0.1$ W/K m and $T = T_0 + \Delta T$. Here uncertainties of the actual contamination thickness are eliminated.

It has to be noted that the numerical calculations matches the experimental data better by using constant thermal parameters for the layer rather than values with a relative temperature dependence similar to that of the CFC material.

6. Conclusions for thermography on W7-X

Morphological effects at the surface of the CFC-material NB31 are described by a 25 μm thick

surface region with a reduced thermal conductivity of 10 W/K m or alternatively by an effective heat transmission coefficient between the surface region and the substrate of 250 kW/m² K. The mean temperature enhancement caused by this surface region should be only 25 K at a heat flux density of 10 MW/m² as expected in W7-X. The overestimation of the temperature measured in the MIR region with ordinary resolution of some mm is expected to be lower than 35 K due to the non-uniform distribution (calculated from data of Fig. 2).

Composition and thermal properties of the deposited material on the divertor targets of W7-X are expected to be similar to that found on the target tiles of ASDEX-Upgrade. Modeling matches the measured results with a thermal conductivity of the deposited material of 0.1 W/K m. The partial removal of this contamination observed under surface heat loading of 12 MW/m² is encouraging. This would allow temperature supervising of components with a thermal response time larger than 1 s and critical surface temperature of about 1300 K as in the case of the target plates of W7-X at least for contamination amounts up to 0.02 kg/m².

However, the surface temperature level is still somewhat higher for original contamination amounts larger than 0.02 kg/m² after 1 s exposure of critical heat load. The questions remain: what happens when much larger amounts are deposited during quasi-stationary operation? Do temperature levels higher than 1300 K in W7-X indicate thick contamination or heat flux densities higher than 12 MW/m² in this case? Temperature relaxation measurements with high temporal resolution (<0.5 ms) after short heat pulses can be able to reduce the uncertainties.

References

- [1] J. Boscary et al., Fus. Eng. Des. 75–79 (2005) 451.
- [2] D. Hildebrandt et al., J. Nucl. Mater. 337–339 (2005) 1064.
- [3] S. Clement et al., J. Nucl. Mater. 266–269 (1999) 285.
- [4] P. Andrew et al., J. Nucl. Mater. 337–339 (2005) 99.
- [5] R. Behrisch et al., J. Nucl. Mater. 281 (2000) 42.